

This manual explains basic installation, connection, and safe use of the DA200 Bluetooth OBD2 Scanner with compatible vehicles and mobile apps.



Product Overview

- Connects to a vehicle via the standard 16-pin OBD-II diagnostic port and to a smartphone/tablet via Bluetooth (4.0/5.4, BLE).
- Reads and clears engine/emissions Diagnostic Trouble Codes (DTCs), resets the MIL (Check Engine Light), and reads/erases trouble codes based on vehicle conditions.
- Displays live data such as RPM, vehicle speed, coolant temperature, fuel trims, engine load, and battery voltage (availability depends on vehicle and app). Supports common OBD-II test/readout functions such as freeze frame, on-board monitor test, Mode 6, oxygen sensor test, and Mode 8 (subject to app and vehicle compatibility).

What's in the Box

Adapter x1; User Manual x1; Color box x1

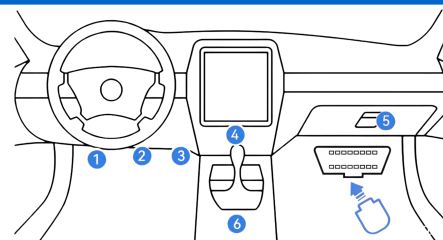
Vehicle Compatibility

- Designed for most OBD-II / EOBD-compliant passenger vehicles (typically 12V systems, operating voltage DC 9V-16V).
- The DA200 primarily supports engine and emissions diagnostics via the OBD-II interface, including reading and clearing DTCs, resetting the MIL (Check Engine Light), and streaming live vehicle data such as RPM, fuel trims, and coolant temperature. Only engine-related systems are supported.
- If you are unsure whether your vehicle supports OBD-II/EOBD, refer to the vehicle owner's manual or contact the vehicle manufacturer. If you still have questions, please contact your seller or Drove West support at info@drovewest.com.

Find the OBD-II Port

OBD-II port location varies by vehicle model. Common locations include:

- Under the dashboard on the driver's side (above the pedals)
- Near the steering column (left or right side)
- Center console area (behind a small cover)



App Download & Selection

DA200 only works with the "OBDII AI" app (available on Google Play or the Apple App Store). For compatibility, scan the QR code on the product packaging or search for "OBDII AI" in the App Store.



Android



iOS

Quick Start: iOS / iPhone

- 1 Plug the adapter into the vehicle OBD-II port
- 2 Turn the ignition to ON (dashboard lights ON). Engine can be OFF unless the vehicle requires the engine running
- 3 Enable Bluetooth on the iPhone
- 4 Open the "OBDII AI" app and automatically connect inside the app (typically do not pair in iOS Bluetooth Settings).
- 5 After connecting, start diagnostics and view live data

Quick Start: Android

- 1 Plug the adapter into the vehicle OBD-II port
- 2 Turn the ignition to ON (dashboard lights ON)
- 3 Enable Bluetooth on the phone
- 4 Enable Location services if requested (often required for BLE scanning)
- 5 When prompted, allow permissions such as Bluetooth / Nearby devices / Location
- 6 Open the "OBDII AI" app and automatically connect inside the app

How to Use (in the App)

- Typical functions include Read Codes, Clear Codes, Reset MIL, Live Data, I/M Readiness, and Freeze Frame (features depend on the app and the vehicle)
- Record codes before clearing. Clearing codes does not repair the underlying issue
- If a value is missing (for example oil temperature), the vehicle ECU may not provide that parameter via OBD-II

✓ Tips for Stable Connection

- Keep the phone within 1-2 meters of the adapter and avoid metal shielding/interference
- Use only one Bluetooth app at a time (close other Bluetooth requested apps)
- Android: disable aggressive battery optimization for the "OBDII AI" app to prevent disconnects.

i After Use

- Unplug the adapter after use to reduce battery drain risk and prevent accidental damage
- Store in a dry place away from extreme temperatures and moisture

🛡️ Safety Notes

- ⚠️ Use only when the vehicle is safely parked. Do not operate the app while driving
- ⚠️ This adapter is intended for diagnostics and monitoring; it does not repair vehicle faults
- ⚠️ Do not disassemble, modify, or repair the product. There are no user-serviceable parts inside

Android is a trademark of Google LLC. iOS and iPhone are trademarks of Apple Inc.